

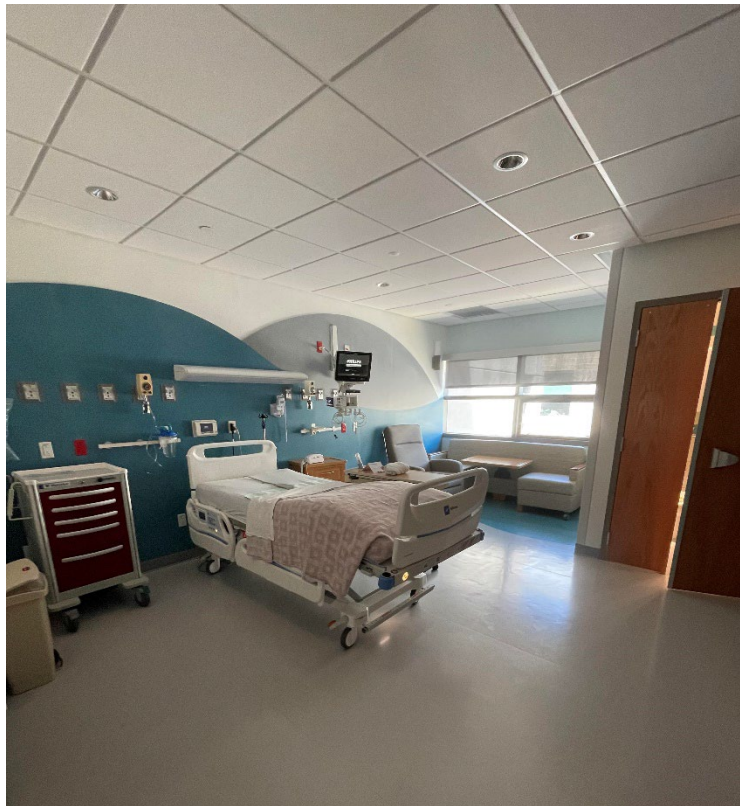
Welcome to St. Tammany!

Pediatric Intensive Care Unit (PICU) Room Tour

I am going to the PICU. When I arrive at the PICU, I will enter the hallway.



From that hallway, I will enter one of the PICU rooms. Each room is set up the same. Let's look at what my room might look like.



My room will have a few places to sit or lie down: a bed, a chair, and a couch. I can call the nurse with the remote in my bed!



I can also watch my favorite TV shows!



My room will have a bathroom just like this one, with a sink, toilet, and shower.



Now I know what to expect when staying in a PICU room at St. Tammany Health System!